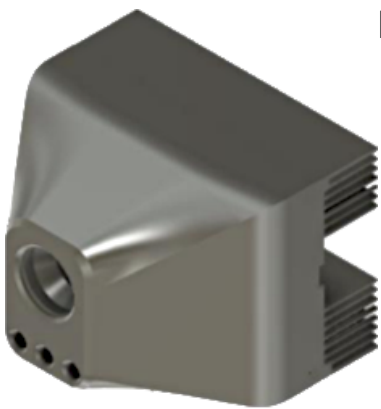


# Leading the way in Work Zone Safety.

## ZC-IDC-V1

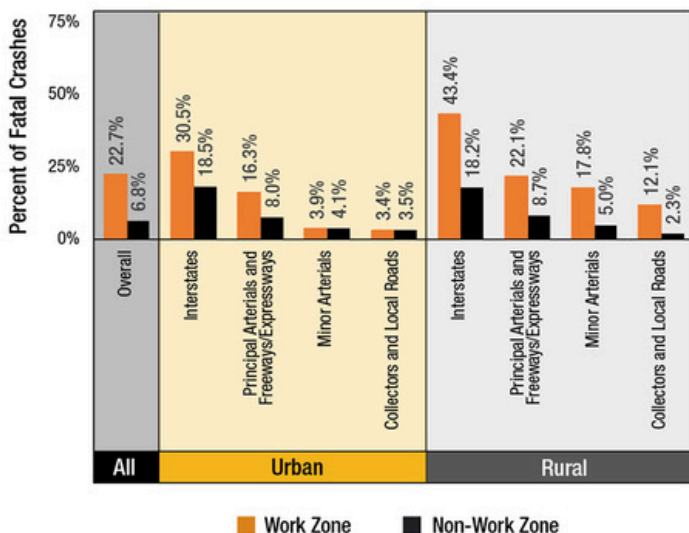


### FEATURES:

- GPS and Cellular connections.
- 8 outputs for control over multiple scenarios.
- 9-19vdc + operating range.
- Compatible with all major smart control systems
- Wireless controller.

Rear-End Collision Involvement in Fatal Work Zone and Non-Work Zone Crashes, 2019-2021 Average

**Fig.1\***



### WHAT IS INTRUSION DETECTION?

Intrusion detection is the ability to detect when a vehicle is entering a set zone or area that should be protected. Zone Command's Camera systems do not use sensors. Sensors can pick up anything from dangerous to non-dangerous objects. Our system is more advanced. It will only alert when a vehicle is traveling at a high enough speed, or direction that can cause harm.



### HOW IT WORKS

Zone Command IDC (intrusion detection camera) is an AI powered camera system which accurately identifies dangerous vehicles that are approaching a work zone.



Once these vehicles are identified, the system can trigger an auditory and visual alarm warning the driver and workers of an impending collision.

### OUR MISSION

Our mission is simple, zero deaths in the work zone. Referring to FIG.1\*, 22.7% of all fatal deaths in the work zone were caused by rear end collisions. ZoneCommand's Intrusion Detection Camera is designed to directly impact that number, and work towards zero deaths.



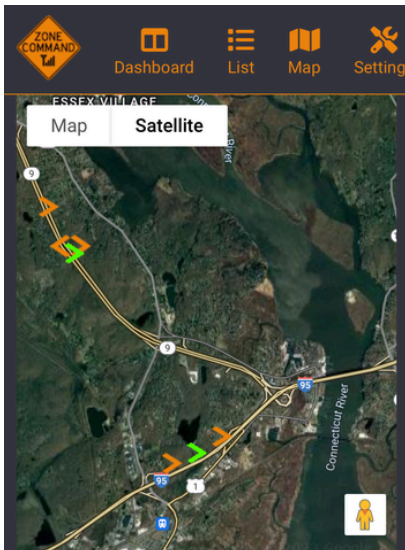
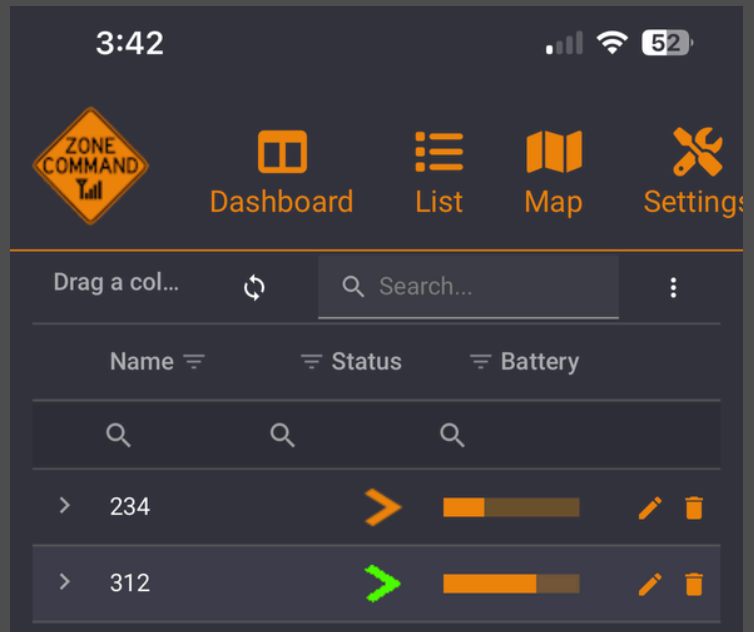
\*<https://workzonesafety.org/work-zone-data/work-zone-traffic-crash-trends-and-statistics/>

# All your **Assets** in one place.

Take Control of the Work Zone

ONLINE

ACCESSIBLE



## Real Time Data

View real time asset location, flash patterns, speed, and much more. Zone Command's advanced camera system allows the end user to log traffic data and view live video all from your phone, computer or tablet.



## Video Recording

View video, anytime, any place, with Zone Command App.

## Instant Alerts

Be the first to know when a significant event occurs with instant alerts via text message or email.



## Call For More Information

315.871.8110

[britter@aepne.com](mailto:britter@aepne.com)